

~~NO FOREIGN DISSEM~~

PHOTOGRAPHIC INTERPRETATION REPORT



BLACK SHIELD MISSION  
BX6706

30 JUNE 1967

NPIC/R-125/67

JULY 1967

GROUP 1 EXCLUDED FROM  
AUTOMATIC DOWNGRADING  
AND DECLASSIFICATION

~~NO FOREIGN DISSEM~~

SECRET NO FOREIGN DISSEMINATION

NPIC/OS-185/67  
3 November 1967

MEMORANDUM FOR: Recipients of BLACKSHIELD Mission Reports  
SUBJECT : Amendment of BLACKSHIELD Caveats

It is requested that the following reports be stamped "NO FOREIGN DISSEMINATION":

NPIC/R-112/67, June 1967  
NPIC/R-115/67, June 1967  
NPIC/R-118/67, June 1967  
NPIC/R-125/67, July 1967  
NPIC/R-132/67, July 1967  
NPIC/R-142/67, August 1967  
NPIC/R-134/67, July 1967  
NPIC/R-137/67, July 1967  
NPIC/R-157/67, August 1967



Assistant for Operations, NPIC

25X1A

GROUP 1  
Excluded from automatic  
downgrading and declassification

SECRET NO FOREIGN DISSEMINATION

TABLE OF CONTENTS

PREFACE	2
TRACK OF MISSION	3
HIGHLIGHTS	4
MISSILES	5
AIR FACILITIES	24
NAVAL ACTIVITY/PORTS	26
ELECTRONICS/COMMUNICATIONS	28
MILITARY ACTIVITY	29
COMPLEXES	33
ATTACHMENTS	

BLACK SHIELD MISSION BX6706, 30 JUN 67 NPIC/R-125/67

PREFACE

THE FOLLOWING INFORMATION REPRESENTS A PRELIMINARY ANALYSIS ON BLACK SHIELD MISSION BX6706, 30 JUNE 1967.

THE HEADER LINE FOR EACH TARGET, READING FROM LEFT TO RIGHT, CONTAINS THE TARGET NAME, COUNTRY CODE, GEOGRAPHIC COORDINATES, AND COMOR NUMBER.

SYMBOLS FOR PHOTO REFERENCE DATA DENOTE LIMITING CONDITIONS, PHOTO INTERPRETABILITY, TARGET COVERAGE, AND MODE. FRAME REFERENCES WILL BE DISSEMINATED AT A LATER DATE.

SYMBOLS USED TO INDICATE CONDITIONS WHICH AFFECT THE APPEARANCE OF THE TARGET ON PHOTOGRAPHY ARE AS FOLLOWS -- C (CLEAR), SC (SCATTERED CLOUD COVER), HC (HEAVY CLOUD COVER), H (HAZE), CS (CLOUD SHADOW), SD (SEMI-DARKNESS), GC (GROUND COVER), CF (CAMOUFLAGE), O (OBLIQUITY), AND GR (GROUND RESOLUTION).

INTERPRETABILITY OF THE PHOTOGRAPHY IS CATEGORIZED AS G (GOOD), F (FAIR), OR P (POOR). THE EXTENT OF TARGET COVERAGE IS DENOTED BY THE SYMBOLS T (TOTAL) OR PT (PARTIAL). THE MODE OF COVERAGE IS SIGNIFIED BY ST (STEREO), NS (NONSTEREO), OR PS (PARTIAL/STEREO).

SECRET

BLACK SHIELD MISSION BX6706, 30 JUN 67 NPIC/R-125/67

HIGHLIGHTS

NO EVIDENCE OF OFFENSIVE SURFACE-TO-SURFACE MISSILE EQUIPMENT OR FACILITIES OBSERVED.

A TOTAL OF 109 SA-2 SITES ARE IDENTIFIED. OF THE 109, THREE ARE NEWLY IDENTIFIED (1 IS OCCUPIED). A TOTAL OF 16 ARE OCCUPIED, 83 UNOCCUPIED, AND 10 ARE IDENTIFICATION ONLY.

HA NOI IS IMAGED ON CLEAR PHOTOGRAPHY OF GOOD INTERPRETABILITY. THE PORT OF HAI PHONG IS GENERALLY CLOUD COVERED AND DAMAGE TO VESSELS IN THE AREA CANNOT BE DETERMINED.

SECRET

SECRET

BLACK SHIELD MISSION BX6706, 30 JUN 67 NPIC/R-125A67

MILITARY ACTIVITY

25X1A

HA GIANG MILITARY AREA

VN 2249N 10459E

NO INDICATION OF TROOP OR SUPPLY BUILDUP OBSERVED. NO NEW CONSTRUCTION, CHANGES IN FACILITIES, OR PREVIOUSLY UNREPORTED ACTIVITY OBSERVED. NO VEHICLES, WEAPONS, OR EQUIPMENT OBSERVED. NO ELECTRONIC OR COMMUNICATIONS FACILITIES OBSERVED.

25X1D



HO-KOU ARMY BARRACKS NORTH

CH 2232N 10357E

NO CONSTRUCTION, CHANGES IN FACILITIES, OR TROOP BUILDUP OBSERVED. OB -- 10 PROBABLE CARGO TRUCKS AND 2 UNIDENTIFIED VEHICLES/PIECES OF EQUIPMENT OBSERVED.

25X1D



LANG SONG ARMY BARRACKS

VN 2150N 10645E

NO NEW CONSTRUCTION, CHANGES IN FACILITIES, OR PREVIOUSLY UNREPORTED ACTIVITY OBSERVED. NO VEHICLES, WEAPONS, OR EQUIPMENT OBSERVED. NO INDICATION OF TROOP OR SUPPLY BUILDUP OBSERVED.

25X1D



THAI NGUYEN ARMY SUPPLY DEPOT NORTH

VN 2138N 10551E

EIGHTEEN OF THE ORIGINAL 37 STORAGE BUILDINGS ARE DESTROYED, 13 HAVE SUSTAINED SEVERE DAMAGE AND 6, LIGHT-TO-MODERATE DAMAGE.

25X1D



BAG GIANG ARMY BARRACKS NE DINH XUYEN

VN 2117N 10612E

AREA IS IDENTIFICATION ONLY.

25X1D



SECRET

25X1A

LING-SHUI POSSIBLE MILITARY BARRACKS AREA CH 1831N 11002E

NO NEW CONSTRUCTION, CHANGES IN FACILITIES, OR PREVIOUSLY UNREPORTED ACTIVITY OBSERVED. NO VEHICLES, WEAPONS, OR EQUIPMENT OBSERVED.

25X1D

LING-SHUI MILITARY TRAINING AREA CH 1828N 10958E

NO NEW CONSTRUCTION, CHANGES IN FACILITIES OR PREVIOUSLY UNREPORTED ACTIVITY OBSERVED. NO VEHICLES, WEAPONS OR EQUIPMENT OBSERVED.

25X1D

HA NOI/LAO CAI RR SEGMENT 1 VN 2220N 10410E

25X1D 25X1D  
25X1D 25X1D  
25X1D 25X1D  
SEGMENT IS OBSERVED FROM 22-15-N 104-16-E TO 22-30-N 103-58-E. THIRTY-TWO PIECES OF ROLLING STOCK ARE IN YARD AT 22-29-N 103-59-E. NO NEW CONSTRUCTION OR MILITARY ACTIVITY OBSERVED.

25X1D

HA NOI/PING-HSIANG RR SEGMENT 2 VN 2132N 10627E

SEGMENT IS OBSERVED THROUGH SCATTERED CLOUD COVER FROM 21-44N 106-39E TO 21-35N 106-30E. NO ROLLING STOCK OBSERVED.

25X1D

HA NOI/PING-HSIANG RR SEGMENT 1 VN 2145N 10644E

ENTIRE SEGMENT IS OBSERVED THROUGH SCATTERED CLOUD COVER. APPROXIMATELY 80 PIECES OF ROLLING STOCK ARE OBSERVED. SIX LOCOMOTIVES ARE OBSERVED IN A 3-TRACK RAILYARD ON A RAIL BY-PASS AT 21-51-N 106-46-00E. NO NEW CONSTRUCTION OR CHANGES IN FACILITIES OBSERVED. NO ELECTRONIC OR COMMUNICATIONS FACILITIES OBSERVED.

25X1D

25X1D

BLACK SHIELD MISSION BX6706, 30 JUN 67 NPIC/R-125/67

25X1A

HA NOI/PING-HSIANG RR SEG 3

VN 2110N 10604E

THE ENTIRE RAIL SEGMENT IS OBSERVED THROUGH SCATTERED CLOUD COVER. TWO POSSIBLE LOCOMOTIVES AND AT LEAST 116 PIECES OF ROLLING STOCK ARE OBSERVED. DAP CAU RAIL BRIDGE IS UNSERVICEABLE, WITH 2 SPANS DOWN. THE BY-PASS BRIDGE IS SERVICEABLE. THE RAIL BRIDGE AND THE RAIL BY-PASS BRIDGE OVER THE SONG DUONG (RIVER) IS SERVICEABLE.

25X1D



HA NOI/LAO CAI RR SEGMENT 4

VN 2120N 10520E

SEGMENT IS IDENTIFICATION ONLY.

25X1D



HA NOI/LAO CAI RR SEGMENT 5

VN 2110N 10548E

THE ENTIRE SEGMENT IS OBSERVED THROUGH SCATTERED CLOUD COVER. NO SIGNIFICANT ACTIVITY OBSERVED.

25X1D

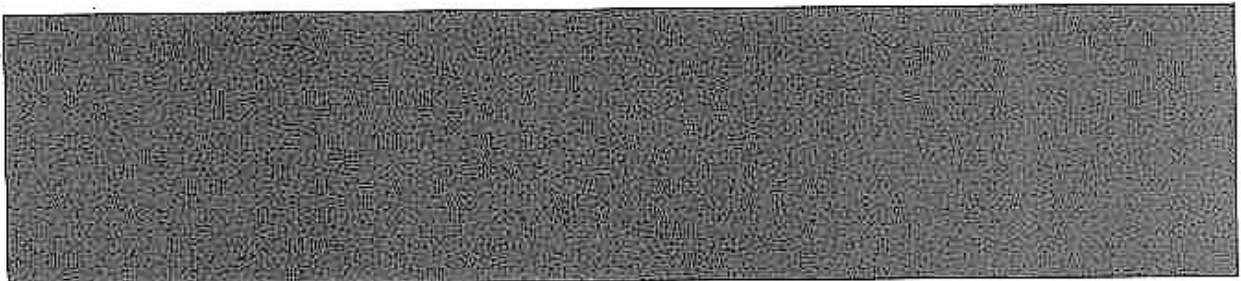


KEP/THAI NGUYEN RAILROAD

VN 2130N 10607E

FIFTEEN PIECES OF ROLLING STOCK OBSERVED ALONG PORTIONS OF RAIL LINE IN CLOUD-FREE AREAS.

25X1D



BAN YEN NHAN ARMY BARRACKS

VN 2056N 10602E

NO COMOR

NO APPARENT CHANGE IN FACILITIES OBSERVED. APPROXIMATELY 14 SA-2 MISSILE CANISTERS ARE DISPERSED IN MILITARY BARRACKS AREA.

BLACK SHIELD MISSION BX6706, 30 JUN 67 NPIC/R-125767

OB - 14 SA-2 MISSILE CANISTERS.

25X1D



COMPLEXES

25X1A

DONG DANG RAILROAD YARD

VN 2156N 10641E

YARD IS IDENTIFICATION ONLY.

25X1D

BAC GIANG COMPLEX

VN 2116N 10611E

COMPLEX IS IDENTIFICATION ONLY.

25X1D

CAO BANG MILITARY COMPLEX

VN 2240N 10615E

COMPLEX IS IDENTIFICATION ONLY.

25X1D

LAI CHAU COMPLEX

VN 2203N 10309E

25X1D

25X1D

PROBABLE BRIDGE ABUTMENTS ARE UNDER CONSTRUCTION ON BANKS OF THE BLACK RIVER AT UTM [REDACTED] A CABLE BRIDGE HAS BEEN CONSTRUCTED OVER THE NAM CAI RIVER AT UTM [REDACTED] NO APPARENT CHANGE TO EXISTING FACILITIES OBSERVED.

25X1D

LANG SON COMPLEX

VN 2151N 10645E

25X1D

25X1D

SIX LOCOMOTIVES ARE OBSERVED IN A 3-TRACK RAILYARD ON A RAIL BY-PASS AT 21-51-[REDACTED]N 106-46-00E. A TRUCK PARK WITH APPROXIMATELY 20 TRUCKS IS LOCATED AT UTM [REDACTED] NO CHANGES OBSERVED IN THE TRANSPORTATION FACILITIES. NO ELECTRONIC OR COMMUNICATIONS FACILITIES OBSERVED.

25X1D

25X1A

TIEN YEN COMPLEX VN 2119N 10724E

ROUTE 4 BRIDGE CONSTRUCTION OVER THE SONG TIEN YEN (RIVER) IS NOW COMPLETE. FERRY CROSSING IMMEDIATELY DOWNSTREAM IS STILL ACTIVE. NO OTHER CHANGES OBSERVED.

25X1D

TUYEN QUANG COMPLEX VN 2148N 10512E

COMPLEX IS IDENTIFICATION ONLY.

25X1D

DIEN BIEN PHU COMPLEX VN 2122N 10301E

NO APPARENT CHANGE OBSERVED IN CLOUD-FREE AREAS.

25X1D

LAO CAI COMPLEX VN 2230N 10358E

AT LEAST 4 NEW STORAGE BUILDINGS/BARRACKS ARE UNDER CONSTRUCTION. THE RAIL CLASSIFICATION YARD CONTAINS 32 PIECES OF ROLLING STOCK.

25X1D

HAI PHONG RR STATION CLASS YD & SHOPS VN 2051N 10641E

AT LEAST 75 PIECES OF ROLLING STOCK OBSERVED. NO MISSILES OR MISSILE-RELATED EQUIPMENT OBSERVED.

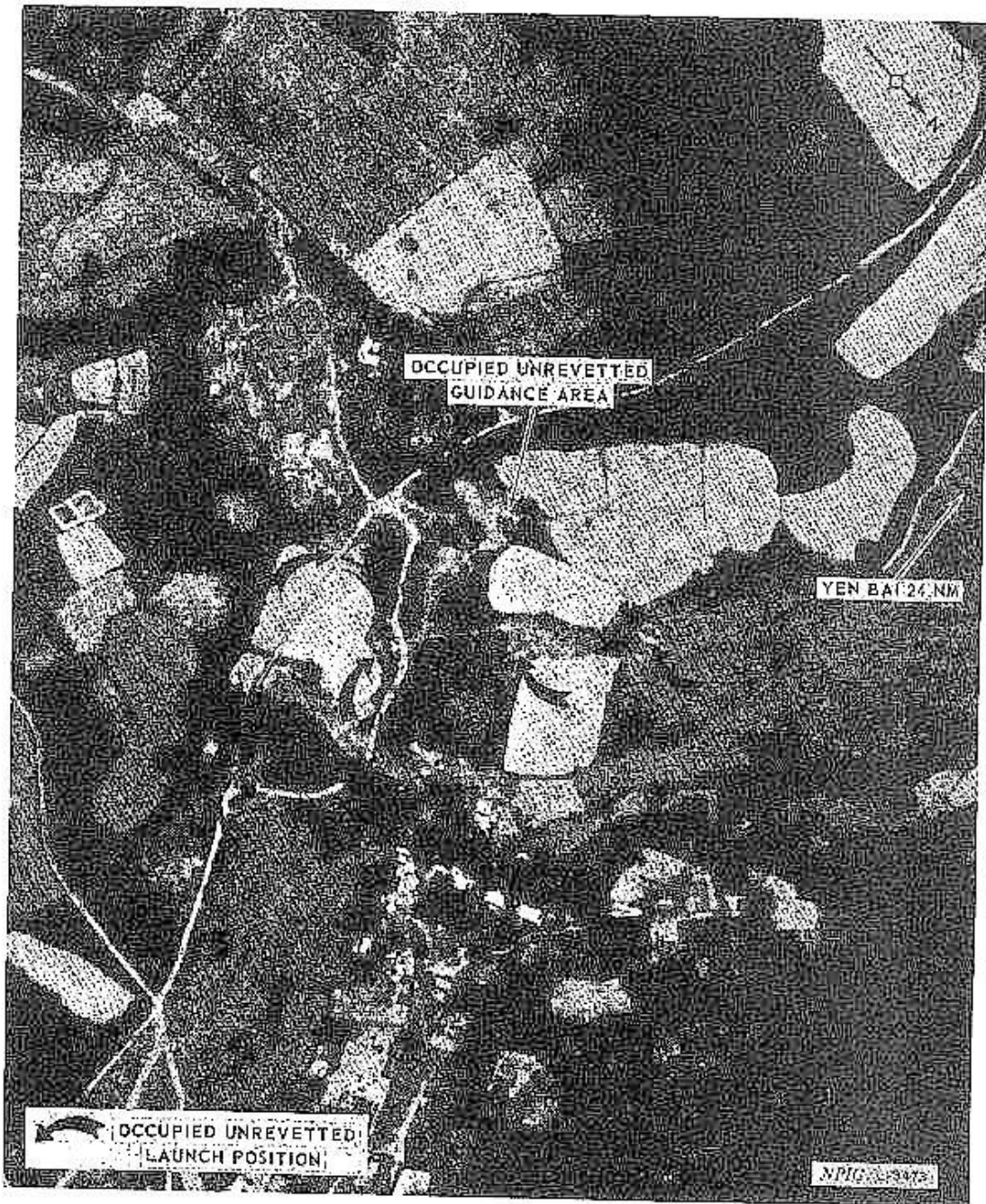
25X1D

VIET TRI RAILROAD YARD VN 2118N 10526E

YARD IS IDENTIFICATION ONLY.

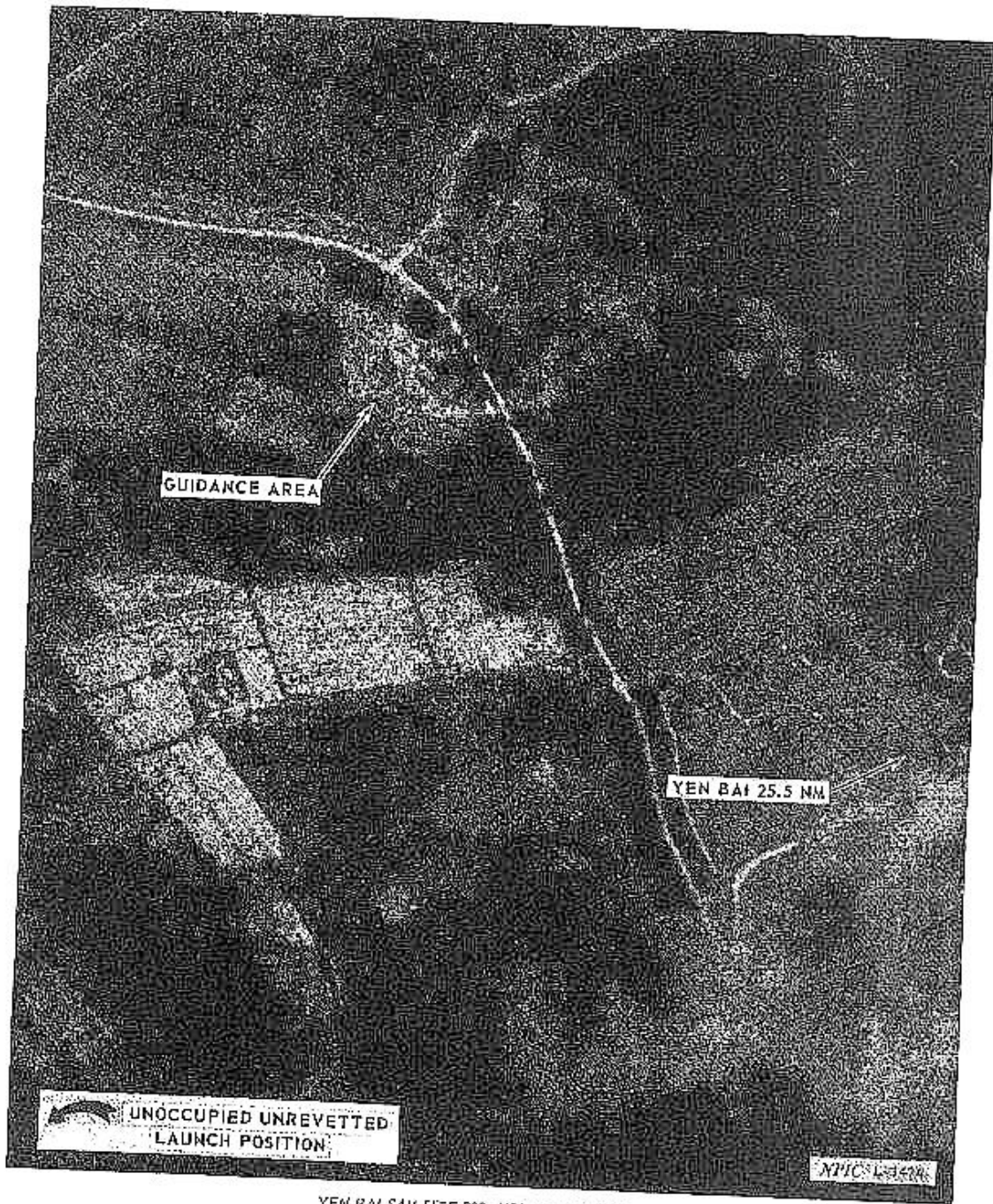
25X1D

SECRET



YEN BAI SAM SITE 206, NORTH VIETNAM

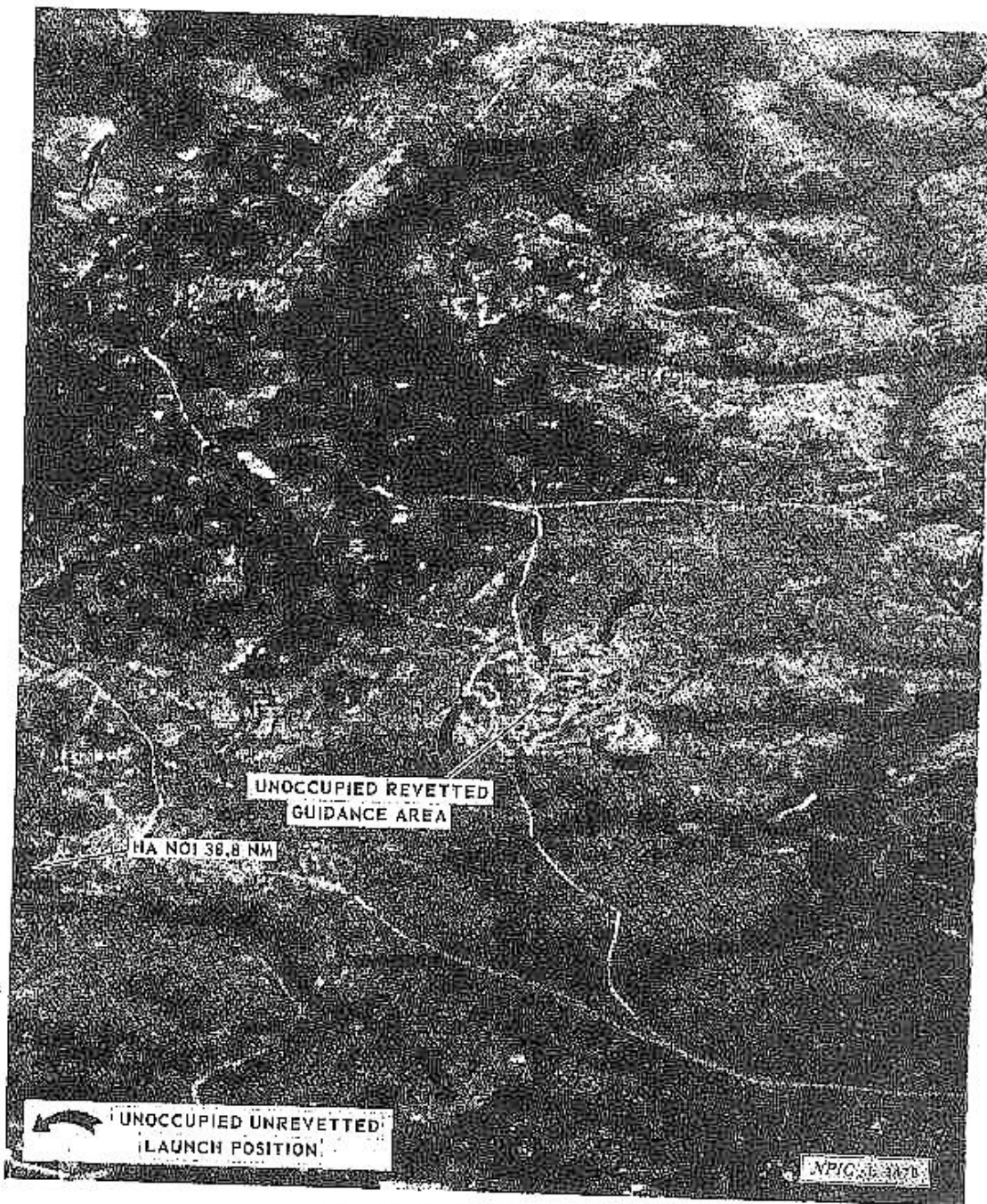
SECRET



YEN BAI SAK SITE 207, NORTH VIETNAM

SECRET

IC/R-125/67



HA NOI SAM SITE 208, NORTH VIETNAM

SECRET